

YOUR NAME HERE

TOM HEACOX
† 916-569-2315
theacox@ngkf.com
CA RE Lic# 00913198

MATT HEACOX
† 916-569-2314
mheacox@ngkf.com
CA RE Lic# 01451720



NEWMARK

OFFICE SPACE FOR LEASE
2220 Douglas Blvd., Roseville

Project Highlights

- » Achieved LEED EB Gold Certification in 2010
- » Energy efficient solar panels on the rooftop
- » Energy Star rated building
- » Building & monument signage is available
- » Featuring a state-of-the-art conference facility
- » Full service deli & outdoor dining area at 2240 Douglas
- » Excellent on-site professional Property Management & responsible ownership
- » Close proximity to several restaurants and retail services
- » Award-winning architectural design
- » Fiber ready building
- » Free parking



Suite 170: ±1,485 RSF

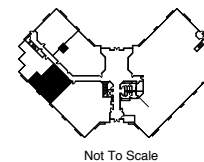
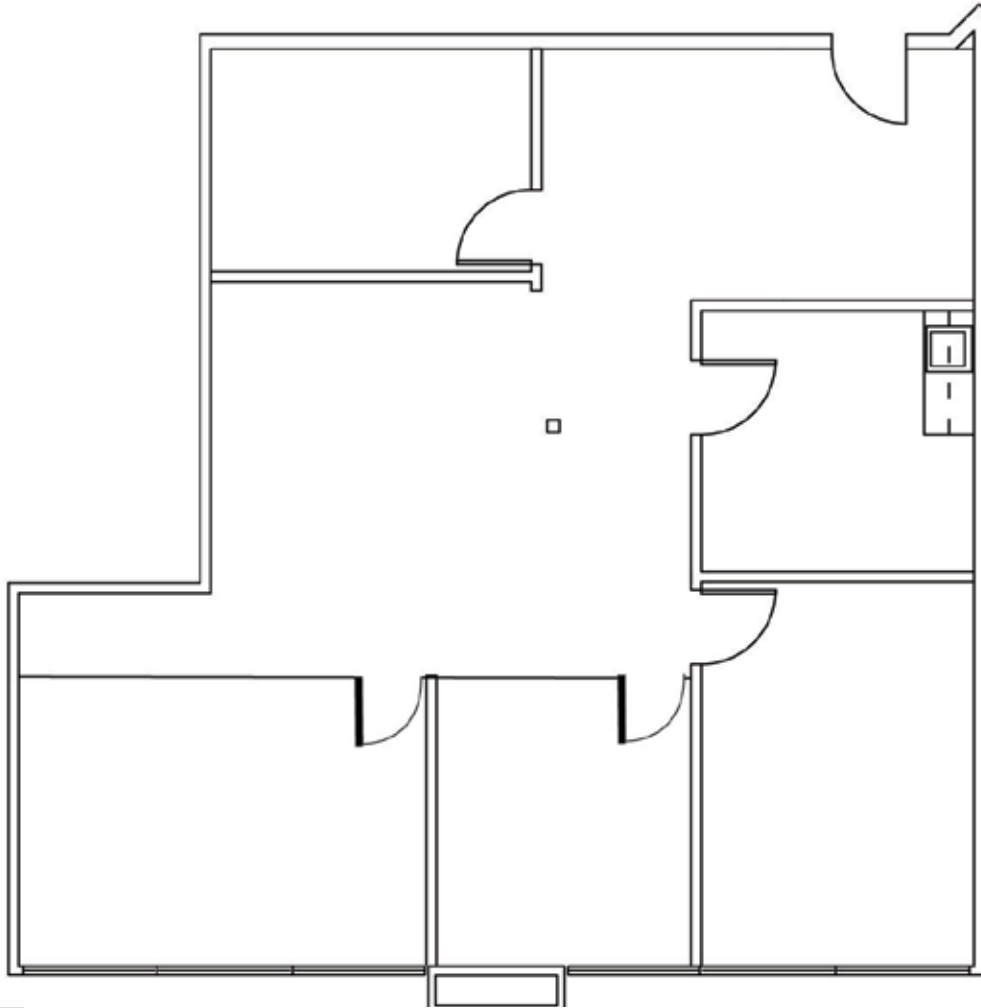
Suite 240: ±5,900 RSF

Suites Available

2220 Douglas Blvd., Roseville

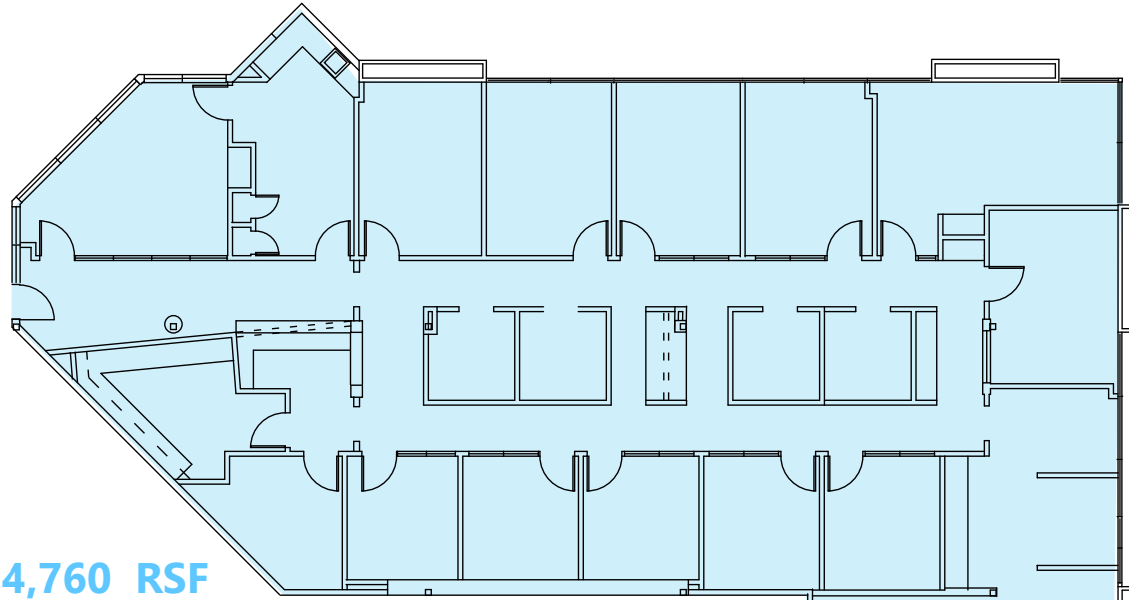
Floor Plan

Suite 170 - ±1,485 RSF

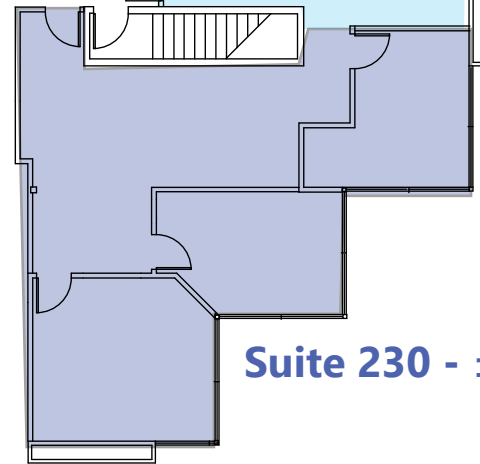


2220 Douglas Blvd., Roseville

Floor Plan



Suite 240 - ±4,760 RSF



Suite 230 & 240 - ±5,900 RSF

Suite 230 - ±1,140 RSF



**PLUG
& PLAY
SUITE
240**



Location Aerial



TOM HEACOX
† 916-569-2315
theacox@ngkf.com
CA RE Lic# 00913198

MATT HEACOX
† 916-569-2314
mheacox@ngkf.com
CA RE Lic# 01451720